

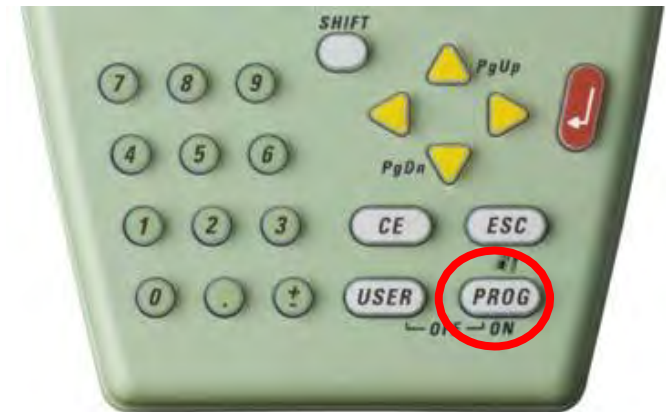
# RX1250 NTRIP RTK Configuration

- Oprema (obično):
  1. Antenna ATX1230/ATX1230 GG
  2. GEB211 Battery
  3. CF Card
  4. GHT56 Holder
  5. GFU Siemens MC75
  6. GSM Antenna
  7. 90° connector
  8. RX1250
  9. Grip with Circular Bubble
  10. Pole



# RX1250 NTRIP RTK Configuration

- Pritisnite **PROG** on RX1250 za uključivanje



- Izaberite **GPS** sensor
- Pritisnite **F1** CONT



# RX1250 NTRIP RTK Configuration



- Pritisnite **3** za Manage
- Pritisnite **5** Configuration Sets



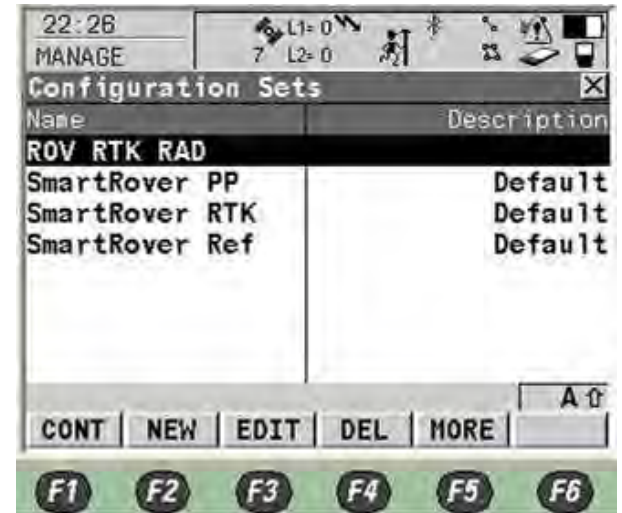
# RX1250 NTRIP RTK Configuration



- Pritisnite **F2** New Configuration

- Ukucajte Configuration Name npr.(BIHPOS)

- Pritisnite **F1** Store



# RX1250 NTRIP RTK Configuration

- Izaberite “View All Screen” za konfiguraciju svih stranica
- Pritisnite **F1**



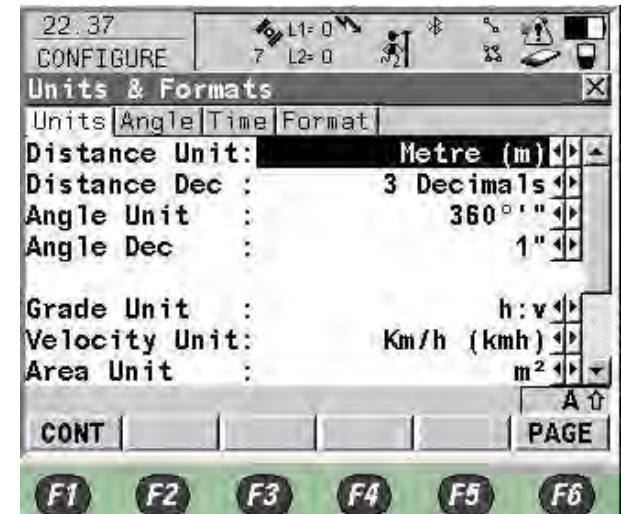
- Izaberite “English” za jezik
- Pritisnite **F1**



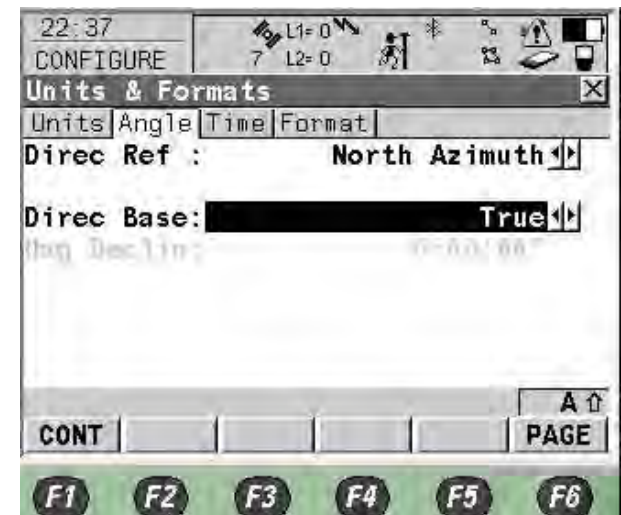
# RX1250 NTRIP RTK Configuration



- Jedinice dužine – **Metre (m)**
- Decimale jedinice dužine – **3 Decimals**
- Uglovne jedinice - **360°**
- Dec – **1"**
- Grade Unit – **h:v**
- Jedinice brzine – **Km/h (kmh)**
- Jedinice površine – **m<sup>2</sup>**
- Jedinice zapremine – **m<sup>3</sup>**
- Jedinice temperature - **°C**
- Jedinice pritiska – **mbar**
- Zatim pritisnite **F6**



- Namjestite **North Azimuth** kao referentni smjer
  - South Azimuth – južni smjer
  - North anticlockwise sjever kao referenca ali suprotno od hoda kazaljke na satu
  - Smjer – use NW, NE, SW & SE za smijer
- Namjestite **True** as the Direction Base
  - Magnetic – namjestite magnetni sjever kao sjever bez ubacivanja deklinacije
- Pritisnite **F6**





# RX1250 NTRIP RTK Configuration

- Namjestite **24 hour** kao format vremena
- Namjestite **Day.Month.Year** kao format datuma
- Pritisnite **F6**

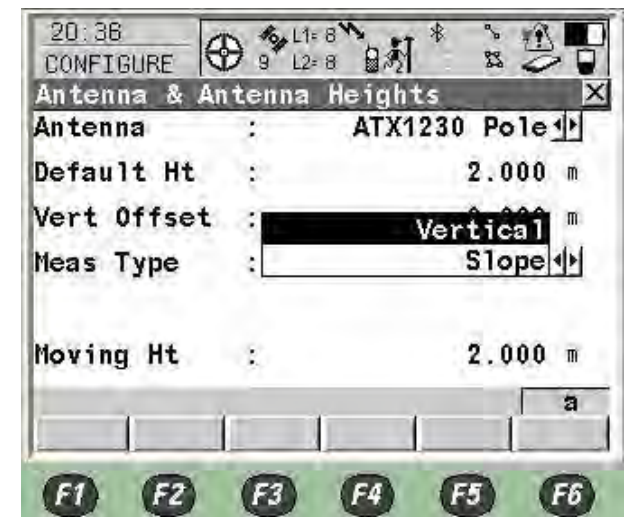
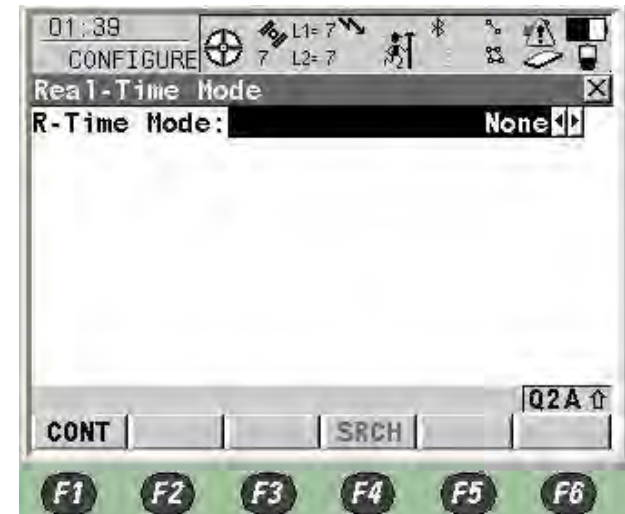


- Namjestite **East, North** kao format mreže
- Namjestite **Lat, Long** kao Geodetski format
- Pritisnite **F1**



# RX1250 NTRIP RTK Configuration

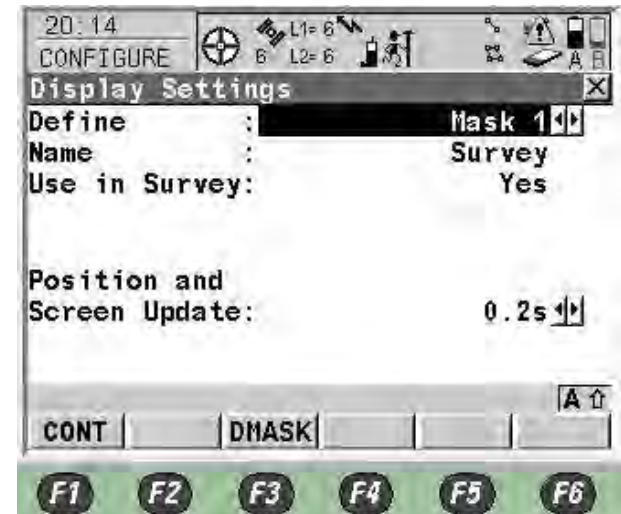
- Namjestite **None** u R-Time modu
- Pritisnite **F1**
- Kasnije će se ponovo postaviti
  
- Izaberite antenu **ATX1230 Pole/ATX1230 GG pole** kada se koristi štap
- Unesite visinu **2.000m**
- Izaberite
- Visina antene pri kretanju **2.000m** pri auto pohranjivanju tačaka
- Pritisnite **F1**





# RX1250 NTRIP Single RTK Configuration

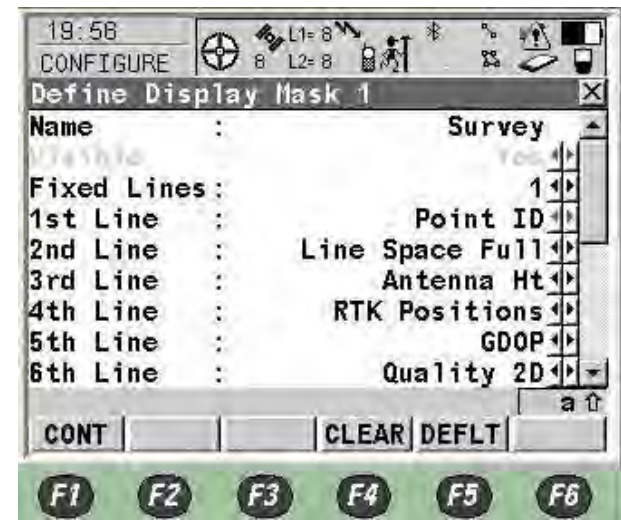
- Definišite izgled displeja za survey **Mask 1**
- Pritisnite **F3** za definisanje



- Izaberite informacije koje Vas zanimaju, pritisnite **Enter** na liniji za selekciju
- Postavka npr.: Lines

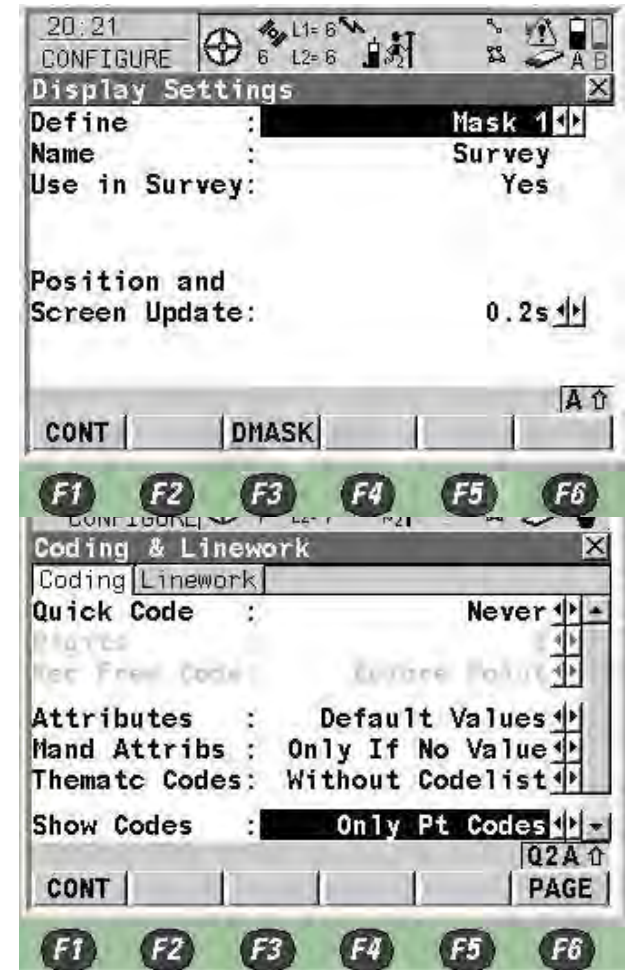
	<b>1</b>
1 <sup>st</sup> Line	Point ID
2 <sup>nd</sup> Line	Line Space Full
3 <sup>rd</sup> Line	Antenna Ht
4 <sup>th</sup> Line	RTK Positions
5 <sup>th</sup> Line	GDOP
6 <sup>th</sup> Line	Quality 2D
7 <sup>th</sup> Line	Quality 3D

- Pritisnite **F1** za nazad



# RX1250 NTRIP RTK Configuration

- Najbrži update pozicije I ekrana je is **0.2s** koristeći Bluetooth ATX1230
  - Koristeći kabl to vrijeme je 0.05s
- Pritisnite **F1**
- Quick code je način brze pohrane
  - **Never** – nije dostupno
  - On – aktivirano
  - Off – dostupno ali nije aktivno
- Digits – broj cifara za quick code
- Attributes – druge informacije o kodu – **Default Values**
- Thematic codes je lista kodova
  - With Codelist - ukoliko imate I zelite selektovati listu
  - **Without Codelist** – lista nije dostupna, manuelni unos
- Pritisnite **F1**

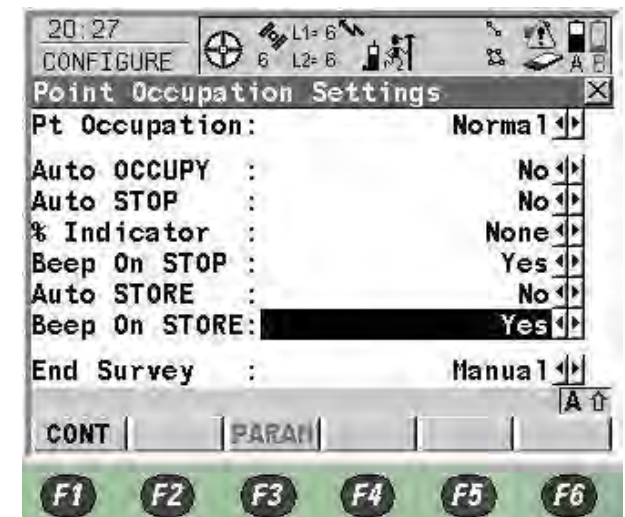


# RX1250 NTRIP RTK Configuration

- Log Raw Obs je pohrana sirovih podataka opažanja
  - **Never** – nema sirovih podataka
  - Static – sirovi podaci statičkih opažanja
  - Static & Moving – kinematsko opažanje, pohrana podataka
- Log rate – 0.2s koristeći bluetooth, obično se stavi **1.0s/5.0s** ako morate pohranjivati podatke za post procesing
- Pritisnite **F1**



- Okupacija tačke
  - **Normal** – Tačka se procjenjuje po svakoj epohi logovanja
  - Instantaneous – interploacijom epoha
- Auto okupacija I Auto stajanje **No** – Manuelni izabir okupacije I stajanja
- time, position, accuracy, parameters se podešavaju pritiskom na **F3**
- Beep on stop – **Yes**
- Auto store – **Yes**
- Beep on store – **Yes**
- End Survey - **Manual**
- Pritisnite **F1**



# RX1250 NTRIP RTK Configuration

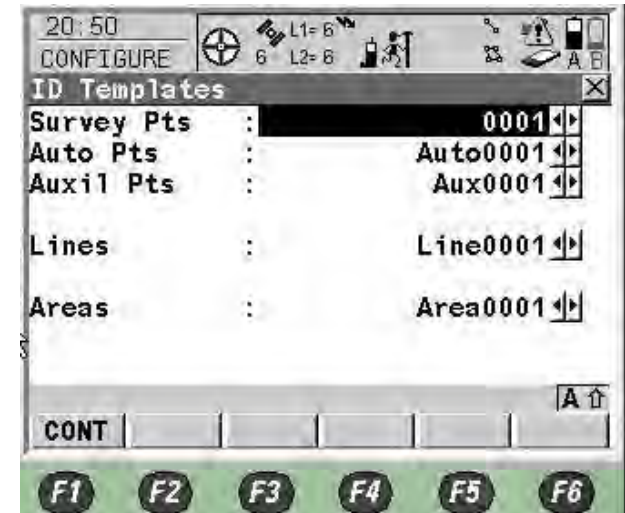
- CQ control je provjera kvaliteta koordinata prije pohrane
  - **None** – bez provjere
  - Position Only – Horizontalna 2D provjera
  - Height Only – Verticalna 1D provjera
  - Position and Height – 3D provjera
- Maximum CQ – ako pređe vrijednost – pojaviće se upozorenje
- DOP Limit set as **None** (GDOP, PDOP, HDOP & VDOP)
- Maximum DOP – ako je van granica GPS pozicioniranje neće biti dostupno
- Allow 2D Position
  - **Yes** – GPS će raditi sa 3 satelita dostupna
  - No – GPS će biti nedostupan sa 3 dostupna satelita
- Pritisnite **F1**



# RX1250 NTRIP RTK Configuration

- ID Templates je predhodno definirani template broja tačke
- Pritisnite **Enter** ako želite promjenu
- Pritisnite **F1**

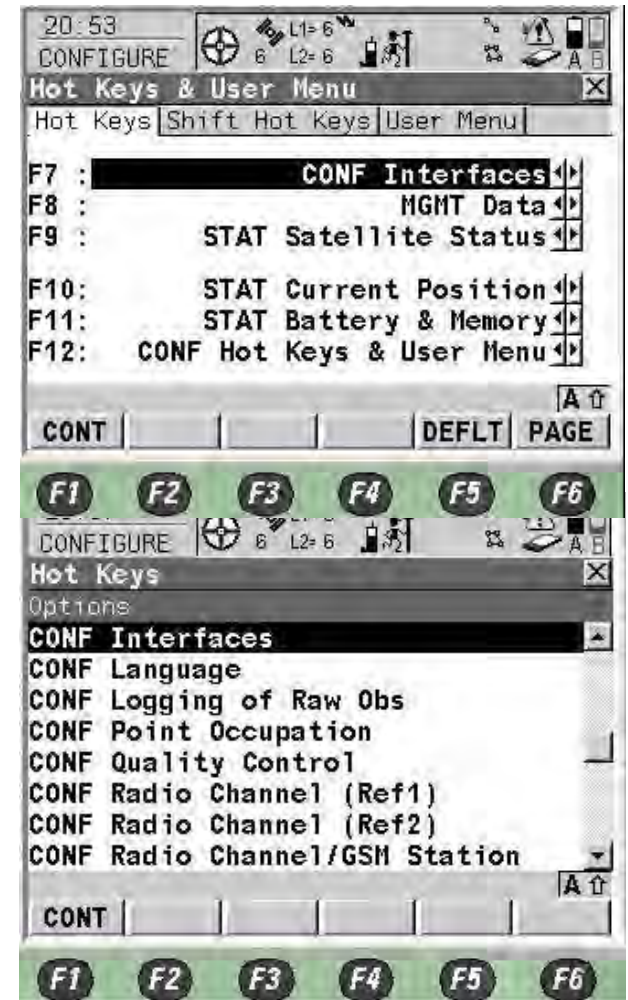
- Izaberite **No** za pohranu seizmičkih podataka
- Pritisnite **F1**



# RX1250 NTRIP RTK Configuration

- Označite kunkicu za svaki Hot Key
- Pritisnite **Enter**

- Izaberite svoje opcije
- Ili ukucajte funkciju koju poznajete
- Pritisnite **F1**



# RX1250 NTRIP RTK Configuration

- Pritisnite **F6** za podešavanje Shift Hot Keys
- Uradite iste korake kao kod podešavanja Hot Keys
- Pritisnite **F6** za podešavanje korisničkog menija





# RX1250 NTRIP RTK Configuration

- Uradite iste korake kao kod podešavanja Hot Keys

- Pritisnite **F1**



- Podesite postavke display-a
  - Touch screen – **On**
  - Screen Beep – **Loud**
  - Screen Illum – **Off**, On for Night Time
  - Key Illum – **Off**, On for Night Time
  - Contrast – **50%**
  - Heating – **Off**, On for Very Cold Time

- Ukoliko touch screen nije tačan pritisnite F5 za kalibraciju
- Pritisnite **F6**





# RX1250 NTRIP RTK Configuration

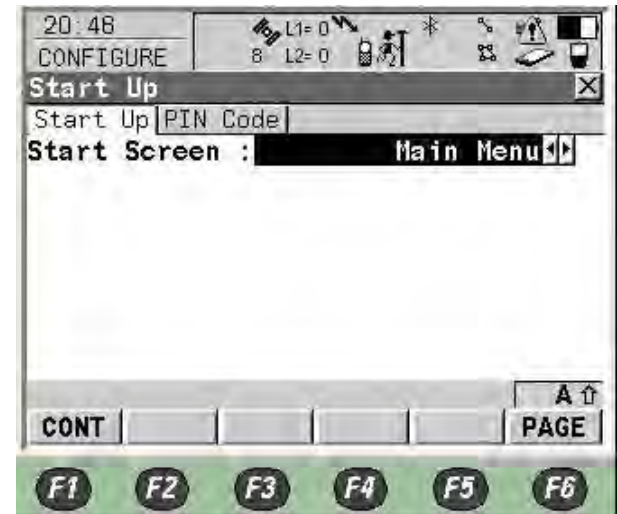
- Podesite zvuke upozorenja
  - Off – nema zvuka na upozorenju
  - Soft – mali zvuk na upozorenju
  - **Loud** – visok zvuk na upozorenju
- Zvuk tipki
  - Off – nema zvuka na upozorenju
  - Soft – mali zvuk na upozorenju
  - **Loud** – visok zvuk na upozorenju
- Pritisnite **F6**
  
- Namjestite default izbore slova  
αNum ili F1-F6
- Pritisnite **F1**





# RX1250 NTRIP RTK Configuration

- Namjestite Start-Up Screen kao
  - **Main Menu** – 6 ikona Main Menu
  - Survey – the Survey Menu (1-step set-up)
  - Other programs
- Pritisnite **F6**
  
- Koristite PIN pri startanju
  - Yes – Maksimum 6 brojeva
  - **No** – Bez passworda
- Pritisnite **F1**



# RX1250 NTRIP RTK Configuration

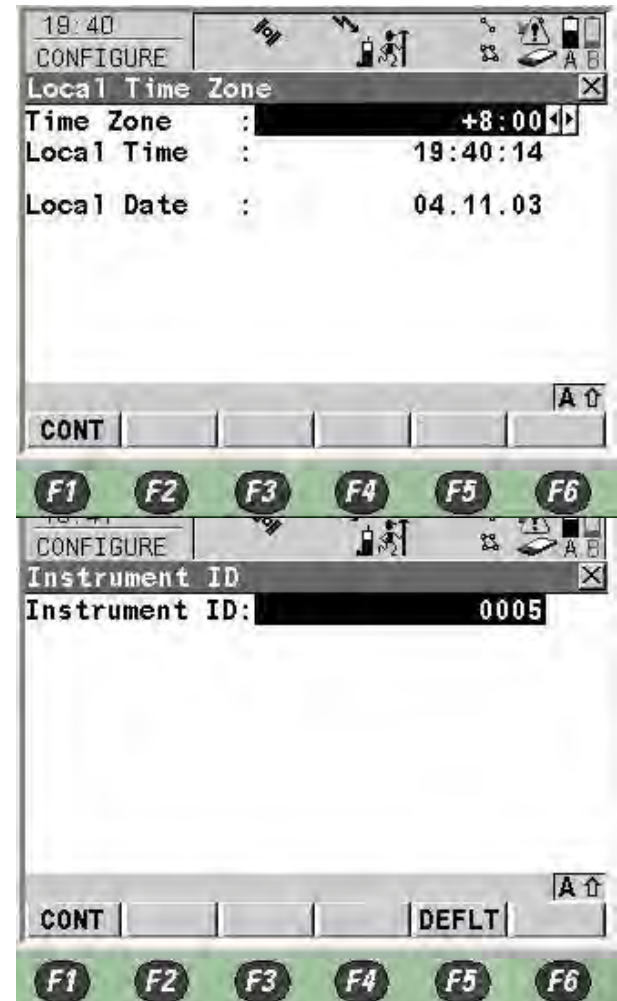
- Satelitski system koji se koristi
  - GPS samo
  - GPS & GLONASS
- L2C tracking – **Automatic** je preporučeno
- Cut-Off angle – elevacijski ugao **-10°**
- Loss of Lock – **Beep & Message**
- SV Health je pohrana kvaliteta signala sa satelita
  - **Automatic** – Praćen na prijemniku, koji su satelitski signali nezdravi, neće biti korišteni za RTK računanja
  - User Defined – Ručno isključivanje neželjenih podataka
- Suppress MPath – **Automatic** je preporučeno kao način ublažavanja multipatha
- Pritisnite **F1**





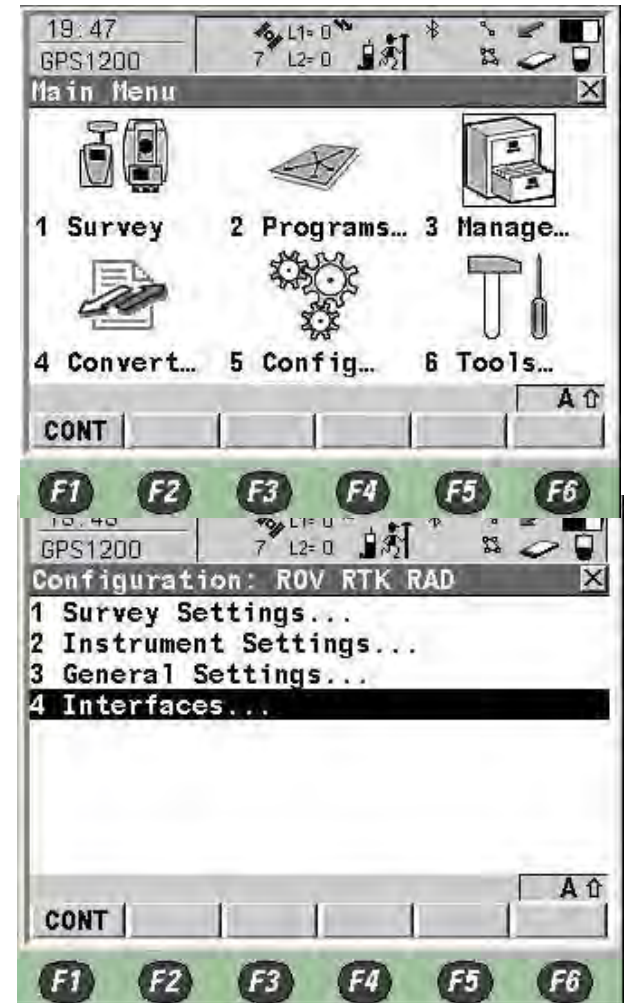
# RX1250 NTRIP RTK Configuration

- Sarajevo je **+2:00** za Time Zone (UTC)
- Pritisnite **F1**
  
- Namjestite ID vašeg instrumenta sa 4 slova
- Pritisnite **F1** za završetak konfiguracije



# RX1250 NTRIP Single RTK Configuration

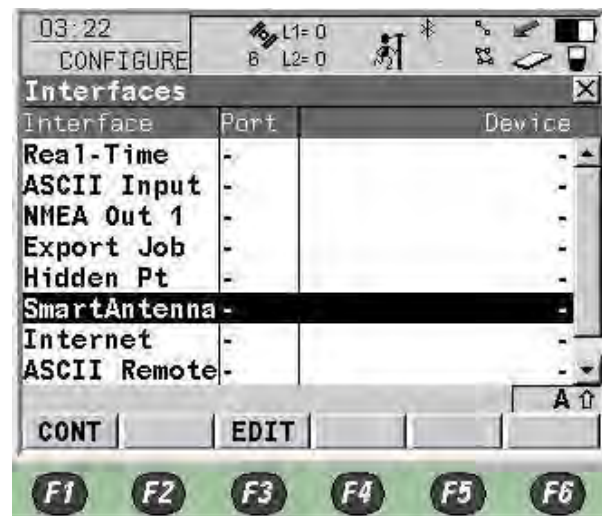
- Sada napravite konekciju bluetooth i real-time interface-a, Pritisnite **5** ili selektujte **5 Config** i pritisnite **Enter**
- Izaberite **4 Interfaces** i pritisnite **Enter**





# RX1250 NTRIP RTK Configuration

- U SmartAntenna Interface, Pritisnite **F3**



- Namjestite Use Device kao **Yes**
- Port as **Bluetooth 1**
- Device as **ATX1230 / ATX1230 GG**
- Pritisnite **F3 SRCH** za pretragu ID adrese Smartantenna
- Pritisnite **F1**



# RX1250 NTRIP RTK Configuration



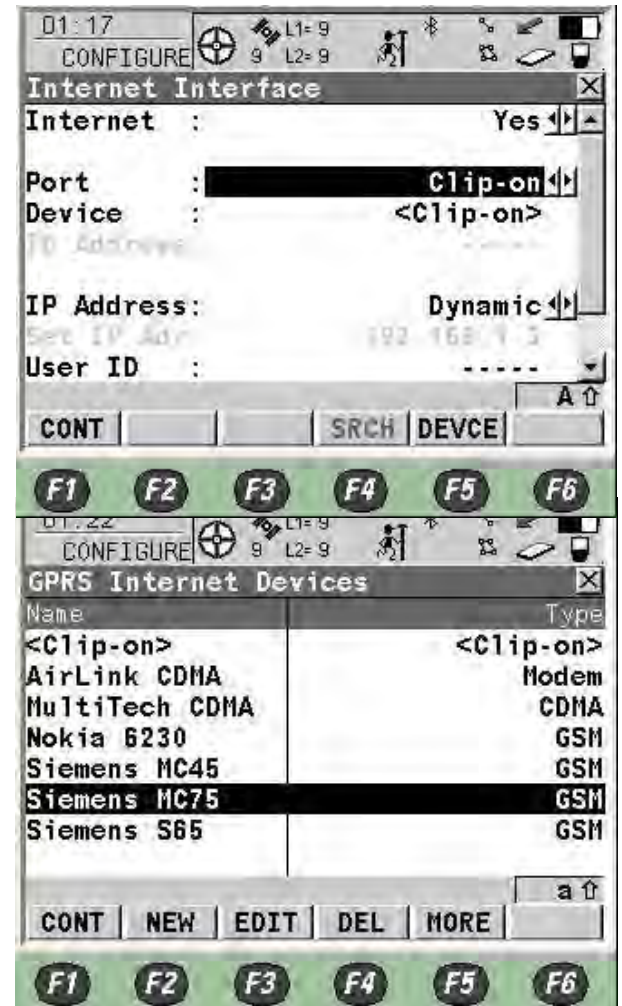
- Sada izaberite **Internet**, pritisnite **F3**
- Namjestite Internet kao **Yes**





# RX1250 NTRIP Single RTK Configuration

- Izaberite **Clip-on** when the GFU plug-in the GHT56
  - Port 1 – port kontrolera
  - Bluetooth – koristi bluetooth
- Pritisnite **F5**
- Select **MC45/MC75** odnosno prema tipu Vašeg uređaja
- Pritisnite **F1**

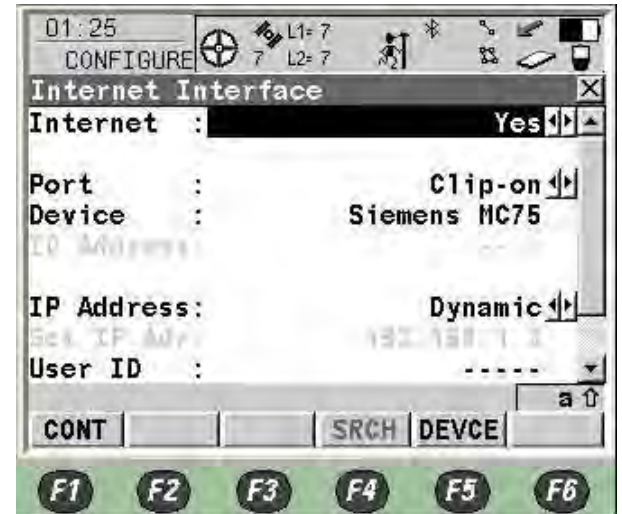






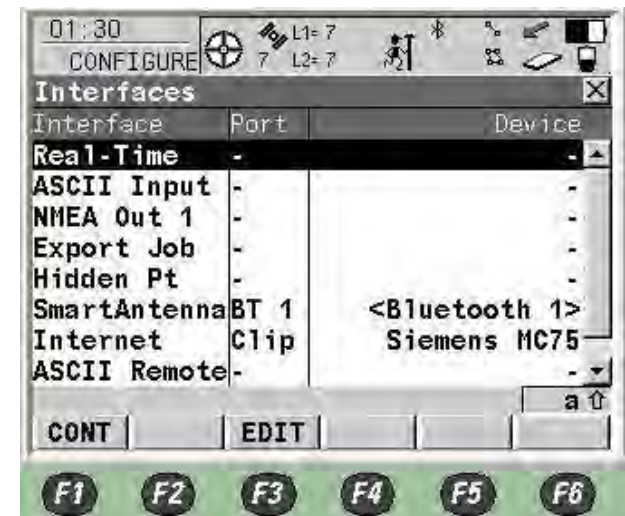
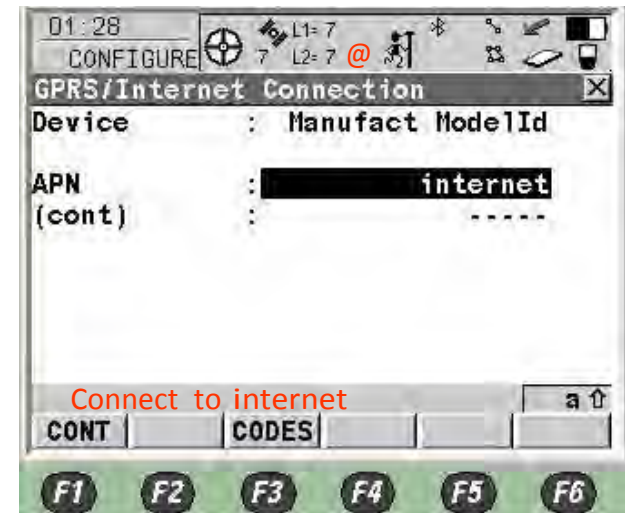
# RX1250 NTRIP RTK Configuration

- Ako koristite bluetooth, pritisnite F4 za pretragu Bluetooth uređaja
  - Pritisnite F1
- 
- Na Internet interface-u, pritisnite F4



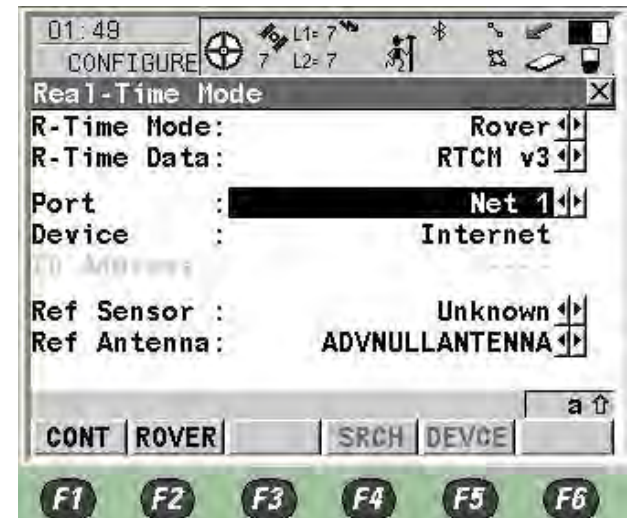
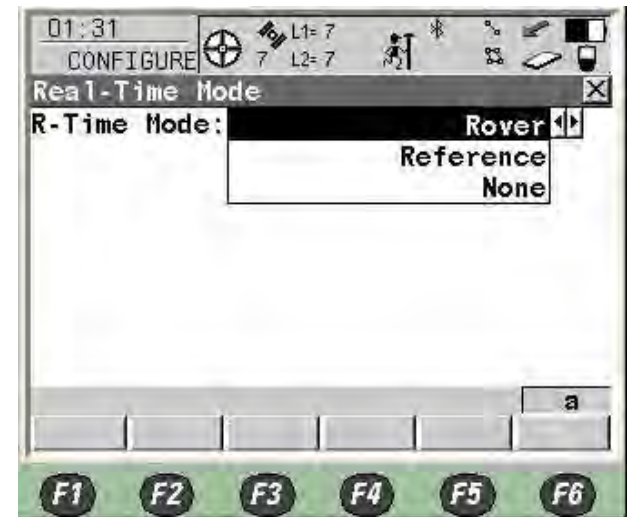
# RX1250 NTRIP RTK Configuration

- Ubacite APN internet access number vašeg provajdera
  - Press F1
- ™ Ako uspješno obavite “Connect to internet” poruka će se pojaviti kao i simbol “@”
- Izaberite Real-Time interface, pritisnite F3



# RX1250 NTRIP RTK Configuration

- Namjestite R-Time Mode kao **Rover**
- Namjestite R-Time Data kao **RTCM v3 v3.1** za RTK
- Namjestite Port kao **Net1**
- Namjestite Ref Sensor kao **Unknown**
- Namjestite Ref Antenna kao **AdvNullAntenna**
- Pritisnite **F2** Rover



# RX1250 NTRIP RTK Configuration

- Namjestite **Any Received** kao Accept Reference
- Namjestite **None** as Ref Network RTK
- Pritisnite **F4**



# RX1250 NTRIP RTK Configuration

- Namjestite **Automatic** kao sending GGA Position
- Pritisnite **F1**
  
- Pritisnite **F6** za NTRIP stranicu



# RX1250 NTRIP RTK Configuration

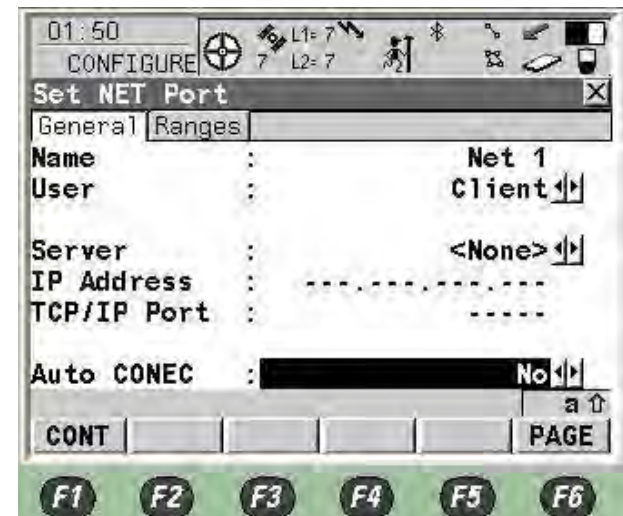
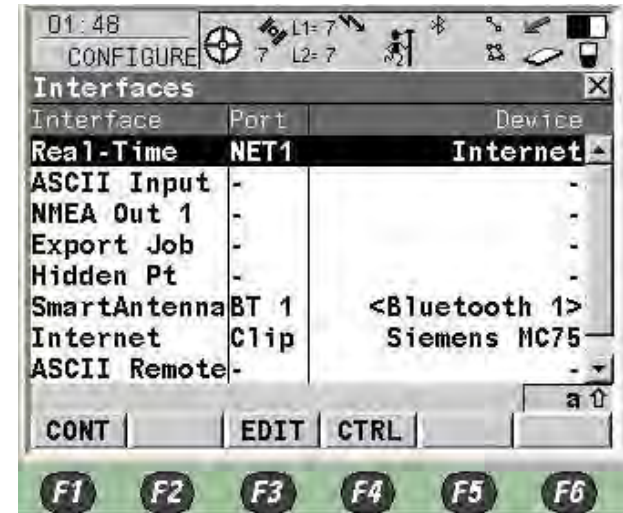
- Namjestite **Yes** za Use NTRIP
  - Unesite  
FBIHPOS username i FBIHPOS password
  - Sada u mountpoint unesite bilo šta
  - Pritisnite **F1**
- 
- Pritisnite **F1**

01:55  
CONFIGURE  
Additional Rover Options  
General | NTRIP  
Use NTRIP: Yes  
User ID : vincent  
(cont) : ----  
Password: \*\*\*\*\*  
Mountpnt: HKSC  
CONT | SRCE | PAGE | A ↑  
F1 F2 F3 F4 F5 F6  
Real-Time Mode  
R-Time Mode: Rover  
R-Time Data: RTCM v3  
Port : Net 1  
Device : Internet  
Ref Sensor : Unknown  
Ref Antenna: ADVNULLANTENNA  
CONT | ROVER | SRCH | DEVCE | a ↑  
F1 F2 F3 F4 F5 F6

# RX1250 NTRIP RTK Configuration



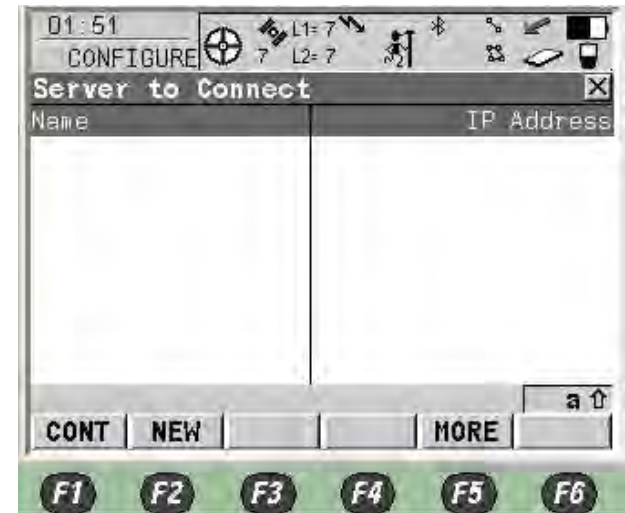
- Na Real-Time interface-u, pritisnite **F4**
- Namjestite User kao **Client**
- Na Server, press **Enter**



# RX1250 NTRIP RTK Configuration



- Pritisnite **F2** New server
- Unestite **Name** za server
- Unesite IP Address kao **195.222.35.158** za BIHPOS server
- Unesite TCP/IP Port as **8080**
- Pritisnite **F1**

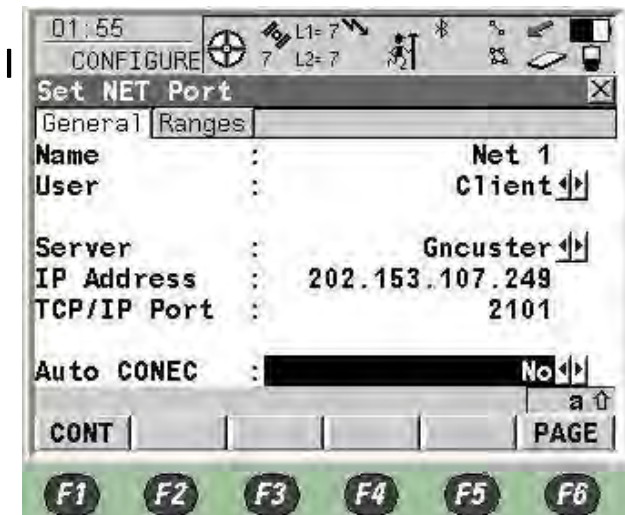
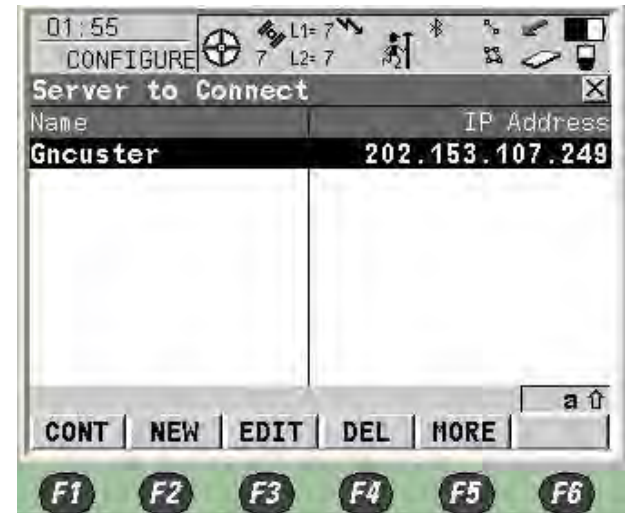




# RX1250 NTRIP RTK Configuration



- Pritisnite **F1**
- Namjestite auto Connect kao **No** – Manual Connect
- Pritisnite **F1**

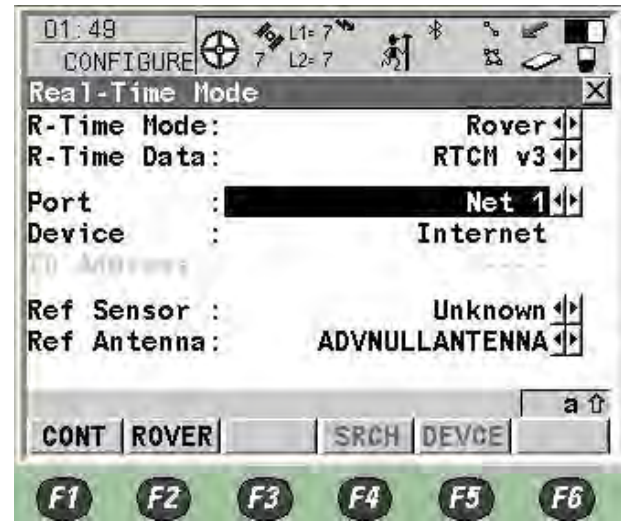


# RX1250 NTRIP RTK Configuration

- Sada pritisnite **F3** za promjenu monuntpoint ponovo



- Pritisnite **F2** Rover



# RX1250 NTRIP RTK Configuration



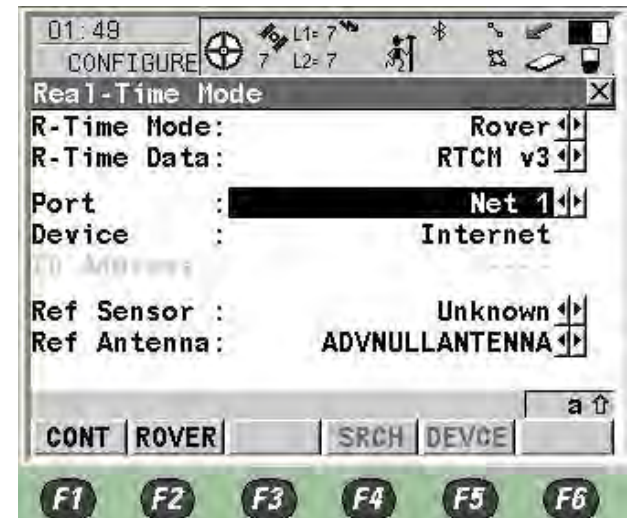
- Pritisnite **F6** za NTRIP stranicu
- Pritisnite **F5** za pretragu mountpointa



# RX1250 NTRIP RTK Configuration



- Pritisnite **F1**
- Pritisnite **F1**



# RX1250 NTRIP RTK Configuration



- Pritisnite **F1**
- Završite NTRIP konfiguraciju



# RX1250 NTRIP RTK Configuration

- Pritisnite **1** ili izaberite **Survey** i pritisnite **F1**

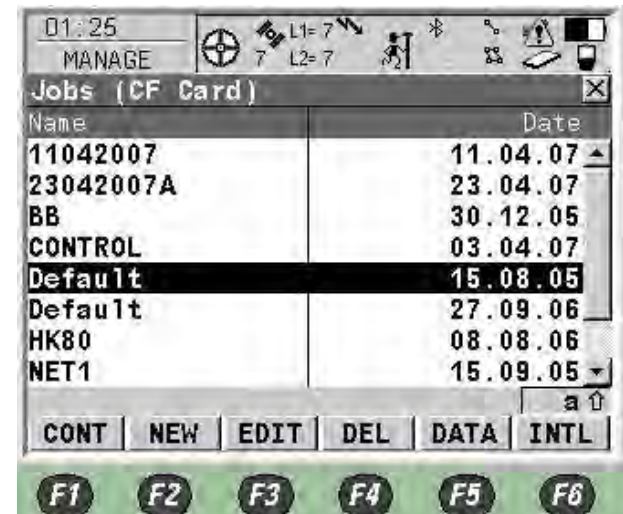


- Izaberite posao i pritisnite **Enter**



# RX1250 NTRIP RTK Configuration

- Pritisnite **F2** za novi posao
- Ili izaberite postojeći posao i pritisnite **F1**
- Ubacite **Job Name**
- Pritisnite **F6** za listu kodova



# RX1250 NTRIP RTK Configuration



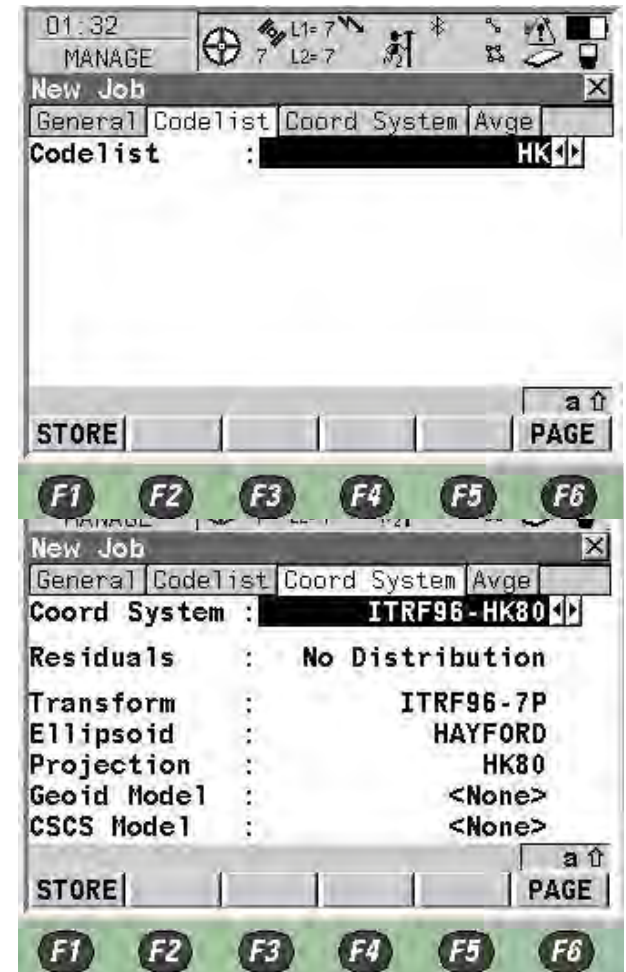
- Press **Enter** to Select your codelist
- Select the one you need and press **F1**





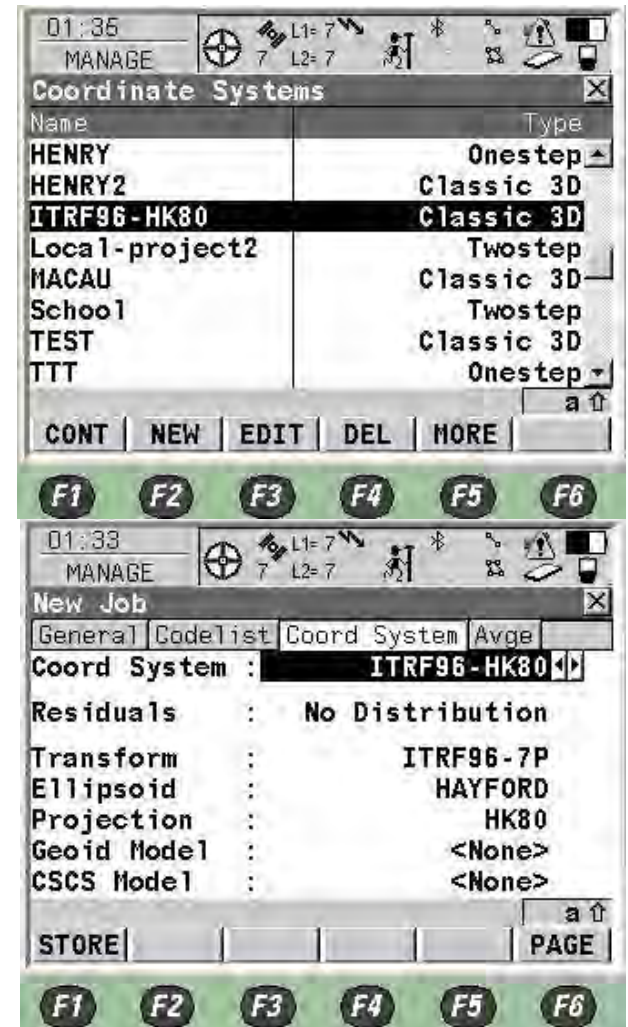
# RX1250 NTRIP RTK Configuration

- Pritisnite **F6** za stranicu koordinata
- Pritisnite **Enter** za odabir koordinatnog sistema



# RX1250 NTRIP RTK Configuration

- Izaberite i pritisnite **F1**
- Pritisnite **F6** za Average stranicu



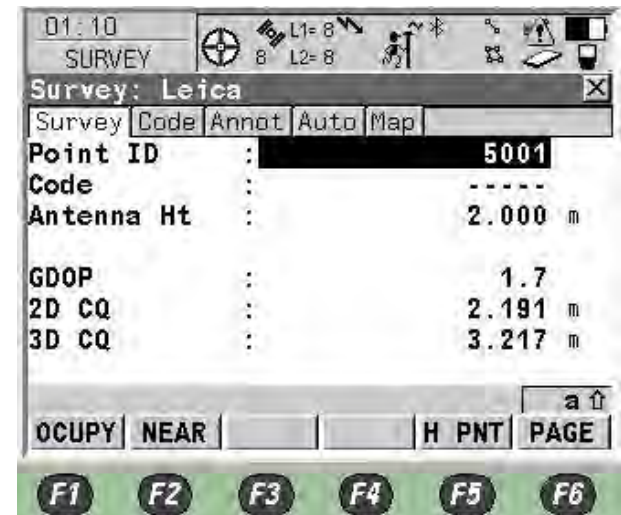
# RX1250 NTRIP RTK Configuration

- Namjestite Average Mode kao **Average** – izračunavanje srednje pozicije tačaka sa istim imenom
- Namjestite Points to Use as **TPS & GPS** – koristite obje opažane tačke
- Ograničenje prosječne pozicije i visine namjestiti npr. **0.050m & 0.075m** kada pozicija prelazi ove granice pojaviti će se upozorenje
- Pritisnite **F1**
  
- Izaberite posao I pritisnite **F1**



# RX1250 NTRIP RTK Configuration

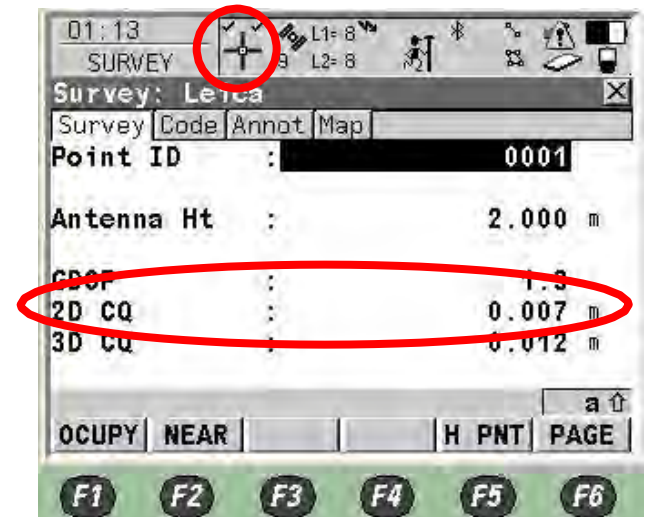
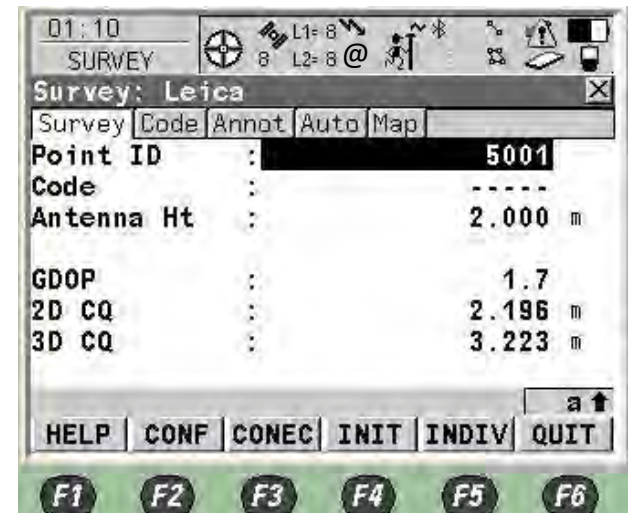
- Izaberite NTRIP konfiguraciju
- Izaberite odgovarajuću antenu
- Pritisnite **F1**
- Pritisnite **SHIFT**



# RX1250 NTRIP RTK Configuration

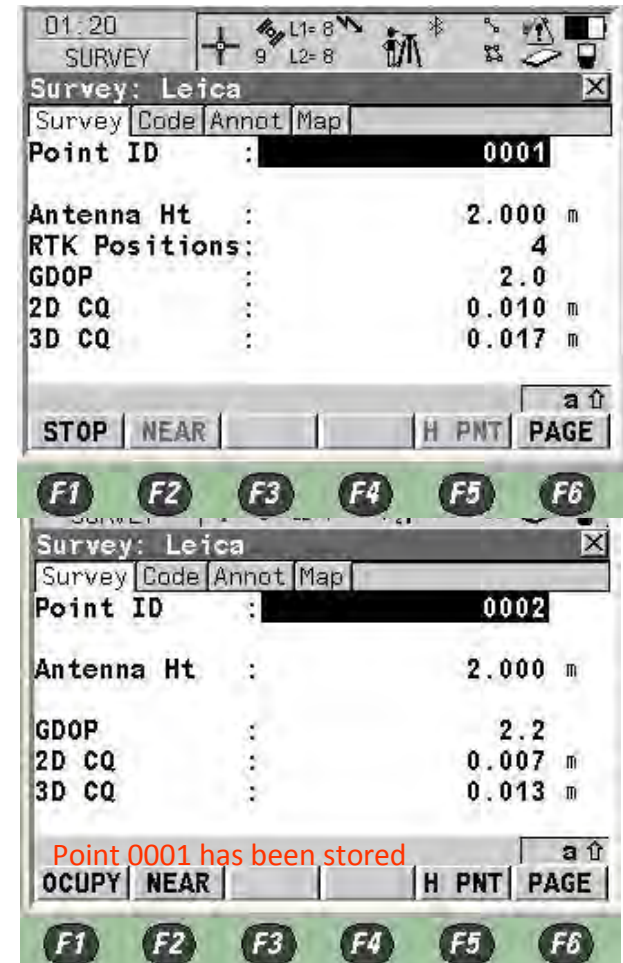
- Pritisnite **F3** Connect

- Poslije primanje korekcije signala  
Signal tačnost će se povećati,  
a i pojaviti će se oznake, kako je pokazano  
na slici desno
- Sada, možete zauzeti tačku i pritisnuti  
**F1** Occupy



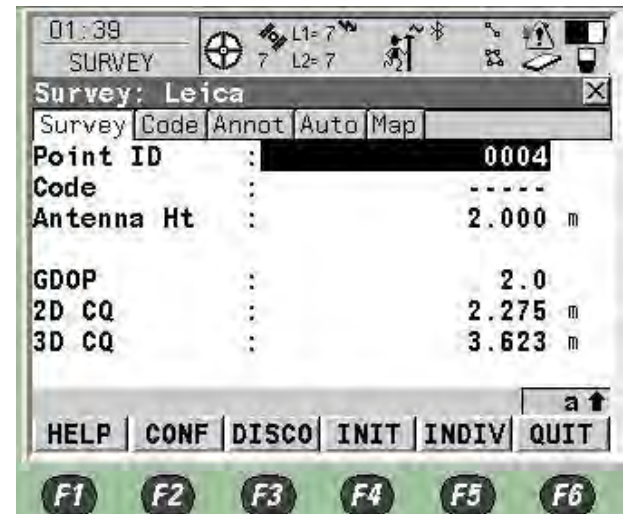
# RX1250 NTRIP RTK Configuration

- Pritisnite **F1** Stop
- Pohranjena vrijednost će biti procijenjena vrijednost srednjih RTK pozicija
- Onda će se automatski pohraniti i **“Point XXXX has been stored”** će se pojaviti na display-u
- Pritisnite **F1** za zauzimanje sljedeće tačke
- Ako ste završili mjerenje prekinite komunikaciju i pritisnite **SHIFT**

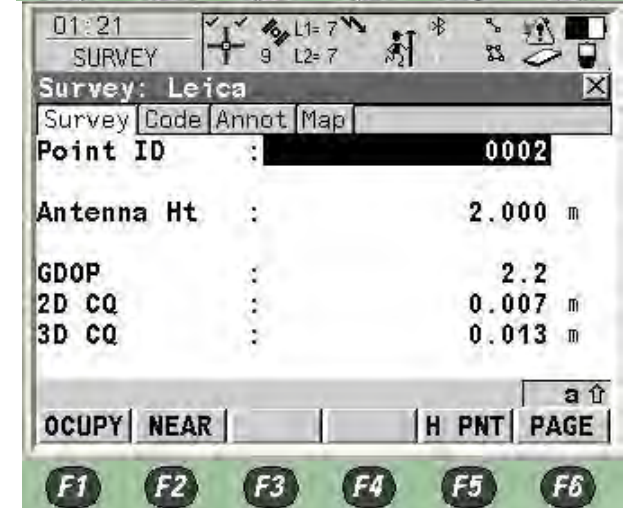


# RX1250 NTRIP RTK Configuration

- Pritisnite **F3** Disconnect

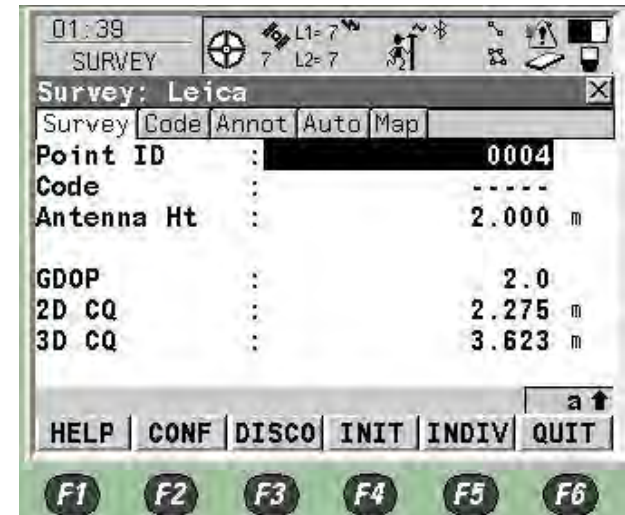


- Pritisnite **SHIFT** ponovo za odustajanje



# RX1250 NTRIP RTK Configuration

- Pritisnite **F6** za odustajanje



- Onda se mora ugasiti u glavnome meniju





# RX1250 NTRIP Single RTK Configuration

- Pritisnite **USER** i **PROG** tipke zajedno za gašenje

